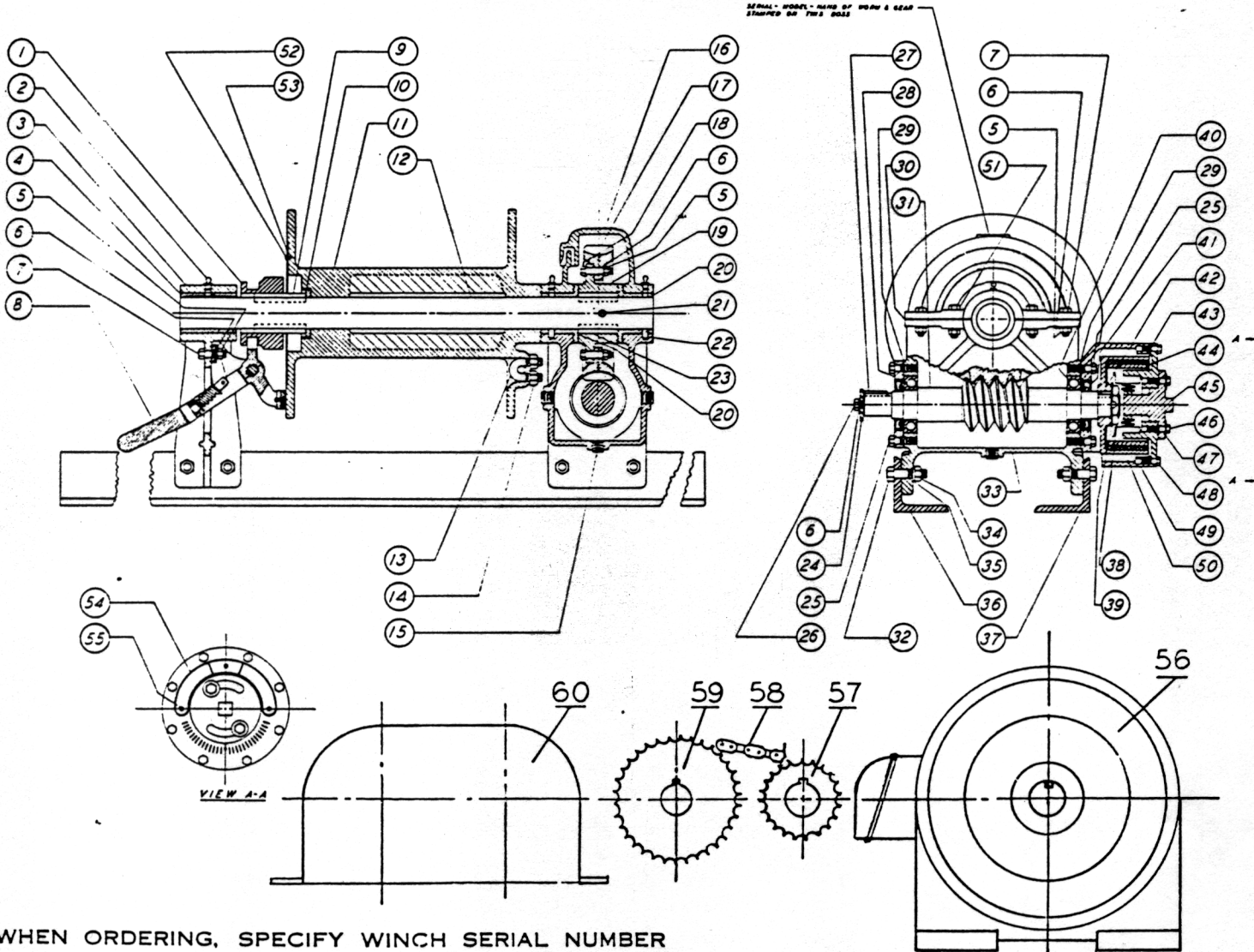


"RIGHTWAY" POWERED WINCHES MODEL E2 PARTS LIST

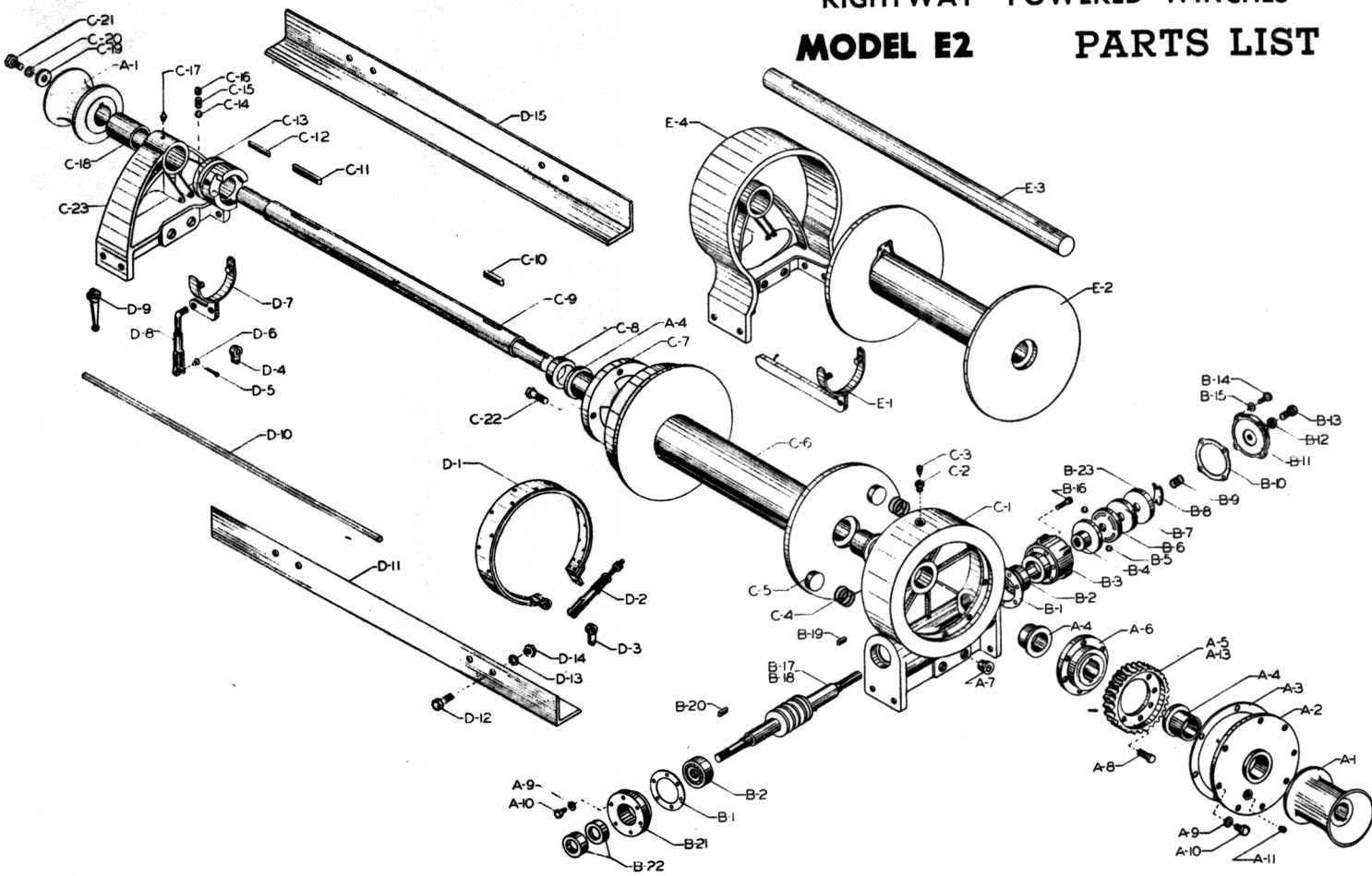
SERIAL - MODEL - NAME OF WORM & GEAR
STAMPED ON THIS HOUSING



WHEN ORDERING, SPECIFY WINCH SERIAL NUMBER

ITEM NO.	NO. REQ'D	DESCRIPTION	ITEM NO.	NO. REQ'D	DESCRIPTION	ITEM NO.	NO. REQ'D	DESCRIPTION	ITEM NO.	NO. REQ'D	DESCRIPTION
1	1	Clutch	16	1	Cover	32	8	Cap Screw	48	8	Cap Screw
2	3	Grease Fitting	17	1	Gear	33	1	Housing	49	1	Housing
3	1	Bracket	18	12	Cap Screw	34	8	Nut	50	1	Drum
4	1	Bushing	19	1	Gear Carrier	35	8	Lock Washer	51	4	Cap Screw
5	22	Nut	20	2	Bushing	36	1	Frame-L. H.	52	2	Drive Screw
6	23	Lock Washer	21	1	Lock Pin	37	1	Frame-R. H.	53	1	Name Plate
7	6	Cap Screw	22	2	Dowel Pin	38	1	Nut	54	1	Instruction Plate
8	1	Clutch Throwout Ass'y	23	2	Key	39	1	Lock Washer	55	3	Drive Screw
9	2	Key	24	1	Washer	40	2	Bearing	56	1	Motor
10	1	Washer	25	12	Cap Screw	41	2	Grease Retainer	57	1	Sprocket-motor
11	1	Drum	26	1	Cap Screw	42	1	Key	58	1	Roller Chain
12	1	Shaft	27	1	Key	43	1	Cap	59	1	Sprocket-reducer
13	1	"U" Bolt	28	1	Cap	44	2	Brake Shoe Ass'y	60	1	Roller Chain Cover
14	2	Nut	29	2	Gasket	45	1	Cam			
15	3	Pipe Plug	30	2	Gasket	46	2	Cap Screw			
			31	1	Worm	47	2	Washer			

"RIGHTWAY" POWERED WINCHES
MODEL E2 PARTS LIST



ITEM NO.	REQ'D NO.	NO. PART	DESCRIPTION	ITEM NO.	REQ'D NO.	NO. PART	DESCRIPTION	ITEM NO.	REQ'D NO.	NO. PART	DESCRIPTION
A-1	2		Capstan	B-15	4		Lock Washer	C-18	1		Bushing
A-2	1		Cover	B-16	6		Screw	C-19	2		Washer
A-3	1		Gasket	B-17	1		Worm, R. H.	C-20	2		Lock Washer
A-4	4		Bushing	B-18	1		Worm, L. H.	C-21	2		Screw
A-5	1		Gear, R. H.	B-19	1		Key	C-22	8		Screw
A-6	1		Hub	B-20	1		Key	C-23	1		Bracket,
A-7	6		Bushing	B-21	1		Cap	D-1	1		Brake Band
A-8	8		Screw	B-22	2		Seal	D-2	1		Tensioner
A-9	14		Lock Washer	B-23	1		Retainer	D-3	1		Arm
A-10	14		Screw	C-1	1		Housing	D-4	1		Arm
A-11	2		Plug	C-2	1		Bushing	D-5	5		Pin
A-13	1		Gear, L. H.	C-3	1		Plug	D-6	2		Pin
B-1	2		Gasket	C-4	2		Spring	D-7	1		Yoke,
B-2	2		Bearing	C-5	2		Drag Brake	D-8	1		Link
B-3	1		Housing	C-6	1		Drum,	D-9	2		Arm
B-4	1		Hub	C-7	1		Clutch Plate	D-10	2		Shaft
B-5	2		Ball	C-8	1		Spacer	D-11	1		Frame
B-6	1		Cam	C-9	1		Shaft	D-12	8		Screw
B-7	1		Disc	C-10	2		Key	D-13	8		Lock Washer
B-8	1		Flat Spring	C-11	2		Key	D-14	8		Nut
B-9	1		Coil Spring	C-12	2		Key	D-15	1		Frame
B-10	1		Gasket	C-13	1		Clutch	E-1	1		Yoke
B-11	1		Cover	C-14	1		Ball	E-2	1		Drum
B-12	1		Nut	C-15	1		Spring	E-3	1		Shaft, short
B-13	1		Screw	C-16	1		Screw	E-4	1		Bracket,
B-14	4		Screw	C-17	1		Grease Fitting				